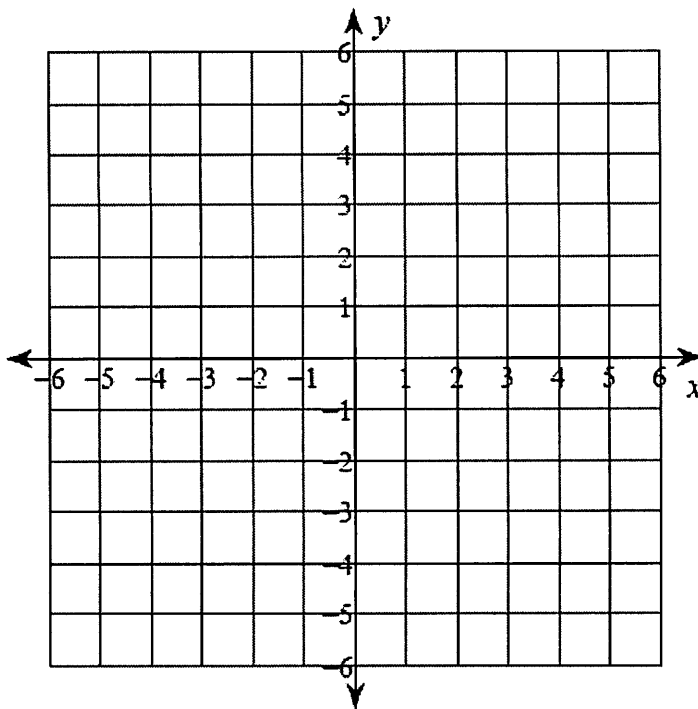


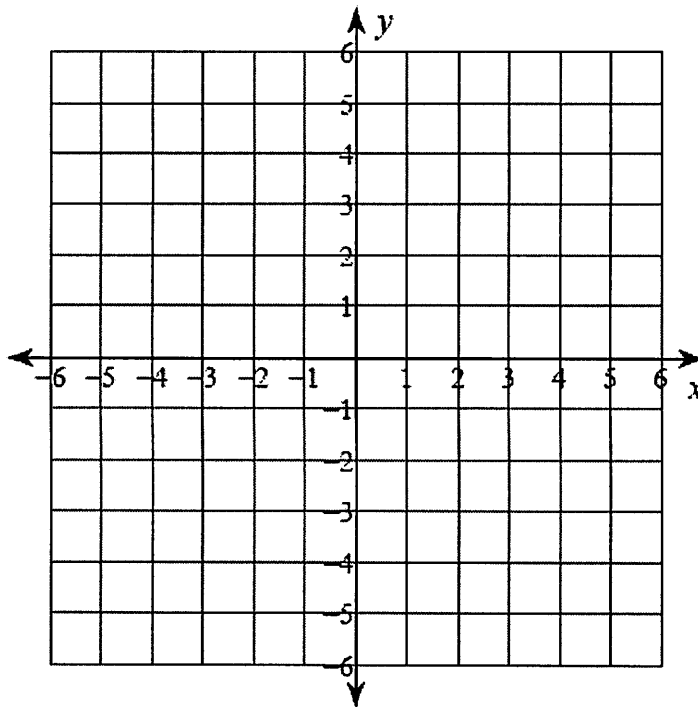
Complete the table and graph the equation $y = \frac{1}{2}x - 3$.

Input (x)	Output (y)



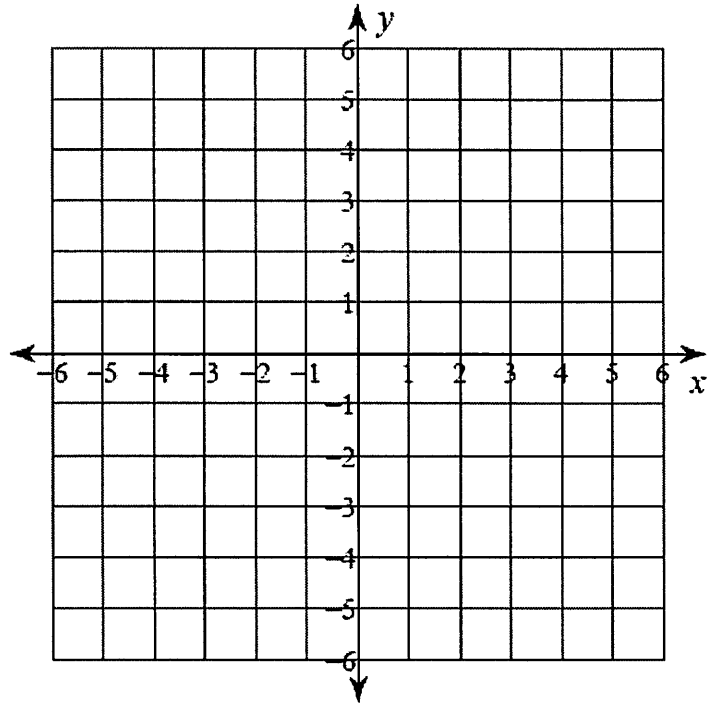
Complete the table and graph the equation $y = x^2 - 4x - 1$.

Input (x)	Output (y)



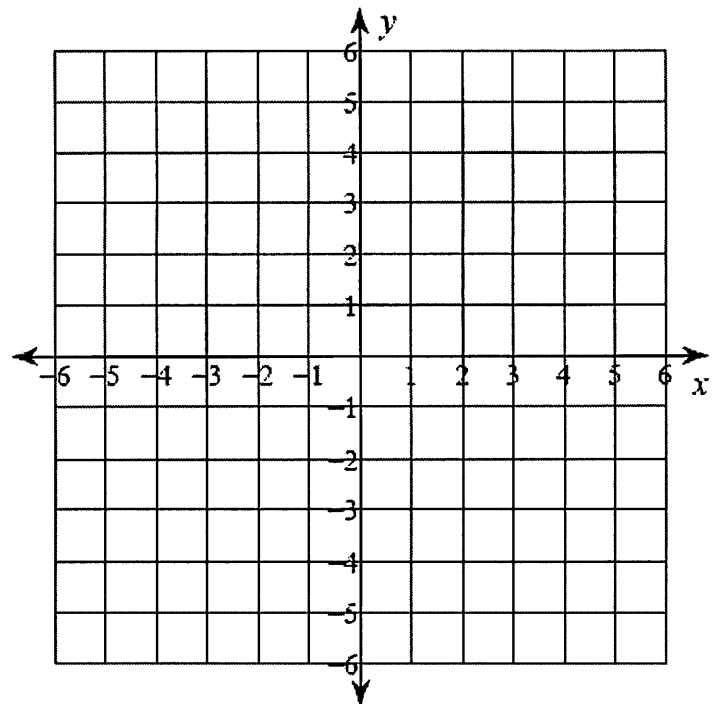
Complete the table and graph the equation $y = |x + 2| - 4$.

Input (x)	Output (y)



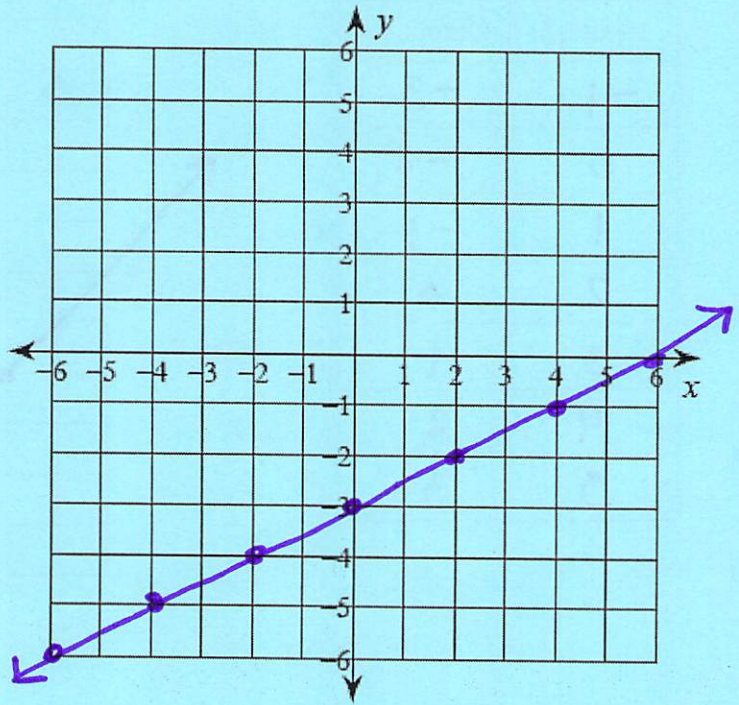
Complete the table and graph the equation $y = \frac{2}{x}$.

Input (x)	Output (y)



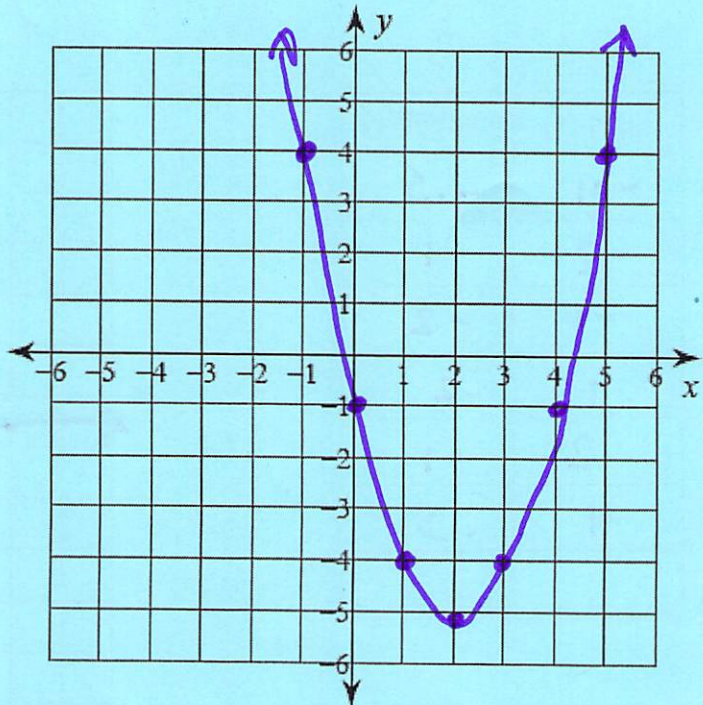
Complete the table and graph the equation $y = \frac{1}{2}x - 3$.

Input (x)	Output (y)
-6	-6
-4	-5
-2	-4
0	-3
2	-2
4	-1
6	0



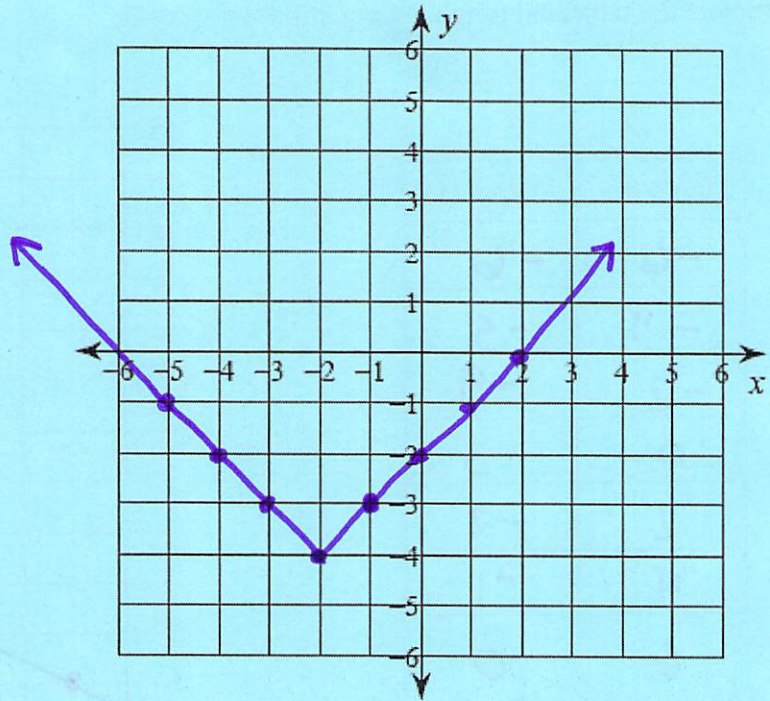
Complete the table and graph the equation $y = x^2 - 4x - 1$.

Input (x)	Output (y)
-1	4
0	-1
1	-4
2	-5
3	-4
4	-1
5	4



Complete the table and graph the equation $y = |x + 2| - 4$.

Input (x)	Output (y)
-1	-3
0	-2
1	-1
2	0
3	1
4	2
5	3



Complete the table and graph the equation $y = \frac{2}{x}$.

Input (x)	Output (y)
-4	-.5
-2	-1
-1	-2
1	2
2	1
4	.5

