

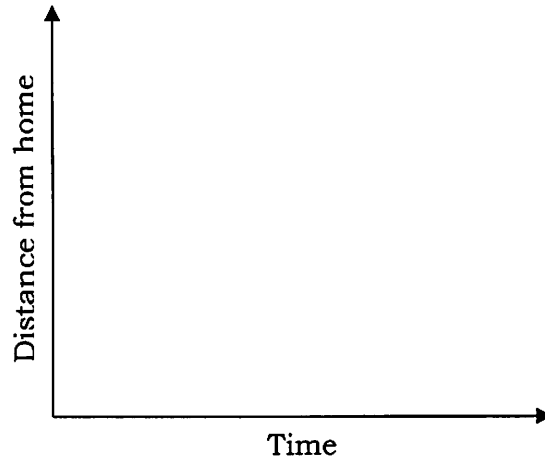
I can graph and interpret graphs and how they relate to everyday events

Relating Graphs to Events

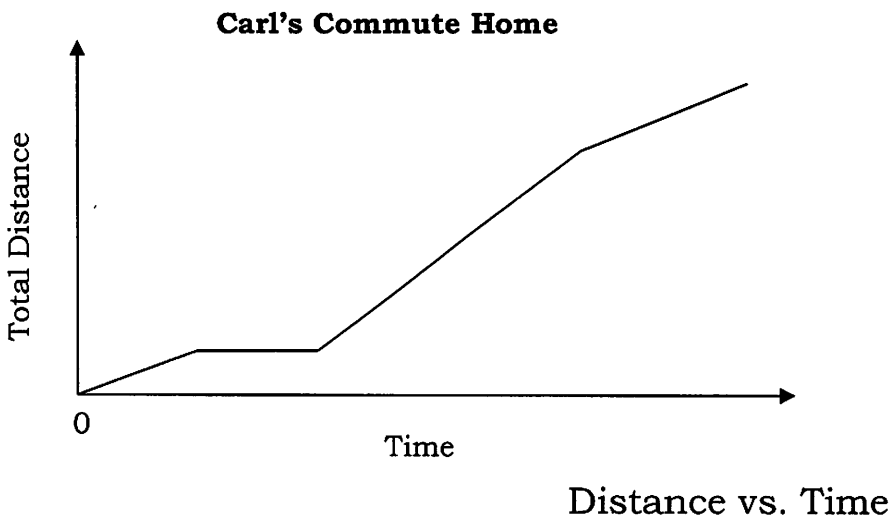
Distance VS. Time Graphing

Example 1: Sketch a graph of a person leaving from home and going to the grocery store.

- A) Jesse drives his car down his street.
- B) Jesse has to stop at a stoplight
- C) Jesse drives the rest of the way to the store.
- D) Jesse stays at the store for awhile.
- E) Jesse drives all the way home.



Example 2: Carl walks and takes a bus from school to home each day. Describe what the graph shows in a narrative, or by labeling each part.

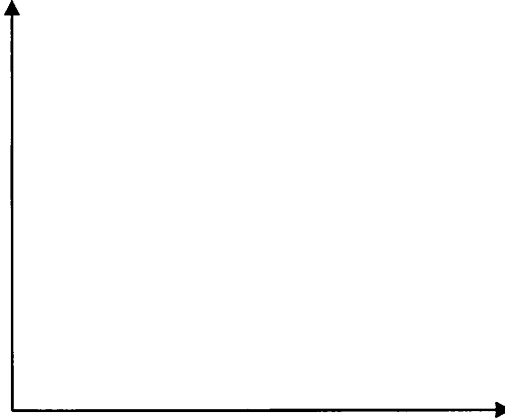


Type of Line	What's Happening

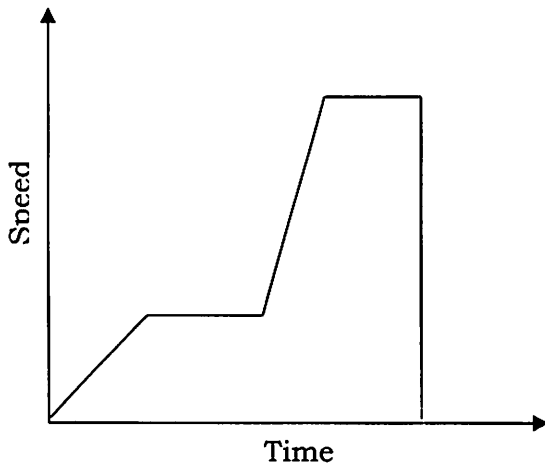
Speed VS. Time Graphing

Example 1: Sketch a graph of a person exercising.

- A) Polly starts by walking to warm her body up
- B) Polly increases her speed from walking to a fast pace run in a few minutes
- C) Polly keeps a constant fast pace run for her workout.
- D) Polly stops to catch her breath.
- E) Polly walks to cool down.



Example 2: Betsy is ice skating. Describe her movement as represented by the graph.



Speed vs. Time

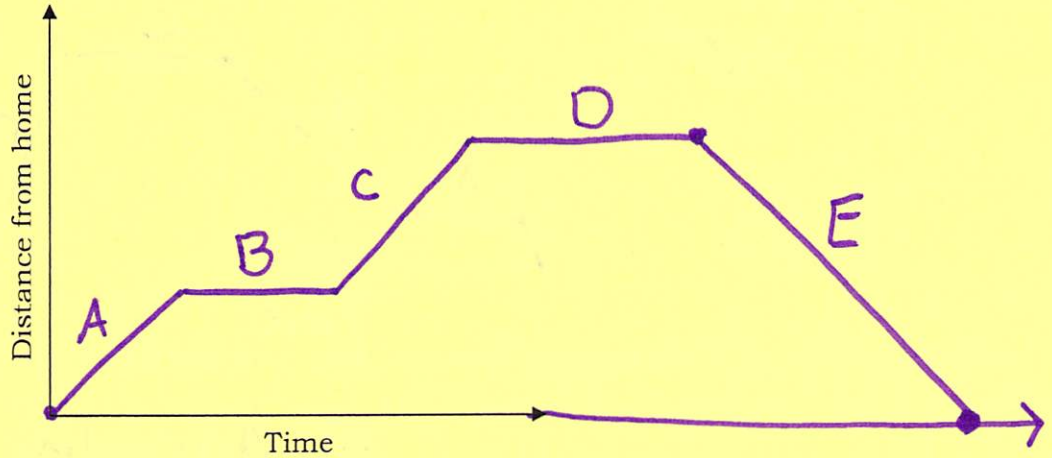
Type of Line	What's Happening

Relating Graphs to Events

Distance VS. Time Graphing

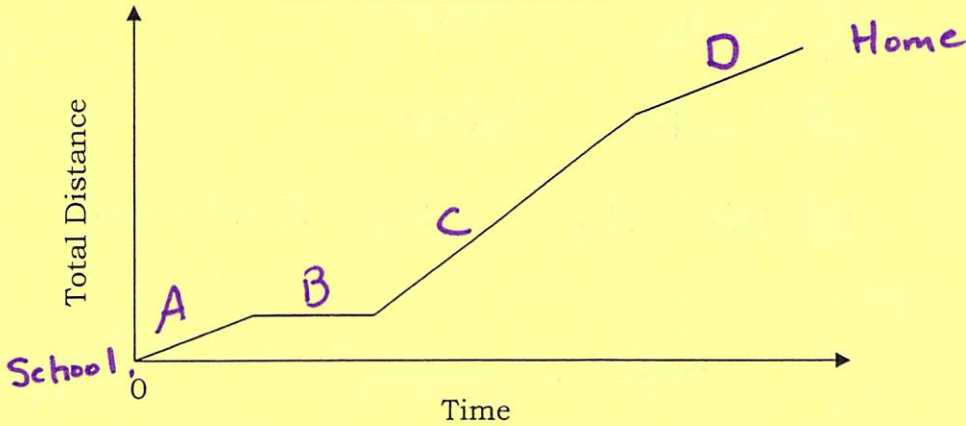
Example 1: Sketch a graph of a person leaving from home and going to the grocery store.

- A) Jesse drives his car down his street.
- B) Jesse has to stop at a stoplight
- C) Jesse drives the rest of the way to the store.
- D) Jesse stays at the store for awhile.
- E) Jesse drives all the way home.



Example 2: Carl walks and takes a bus from school to home each day. Describe what the graph shows in a narrative, or by labeling each part.

Carl's Commute Home



- A) Carl walking to bus stop
- B) Carl standing waiting for bus
- C) Bus speeds up
- D) Bus slow down

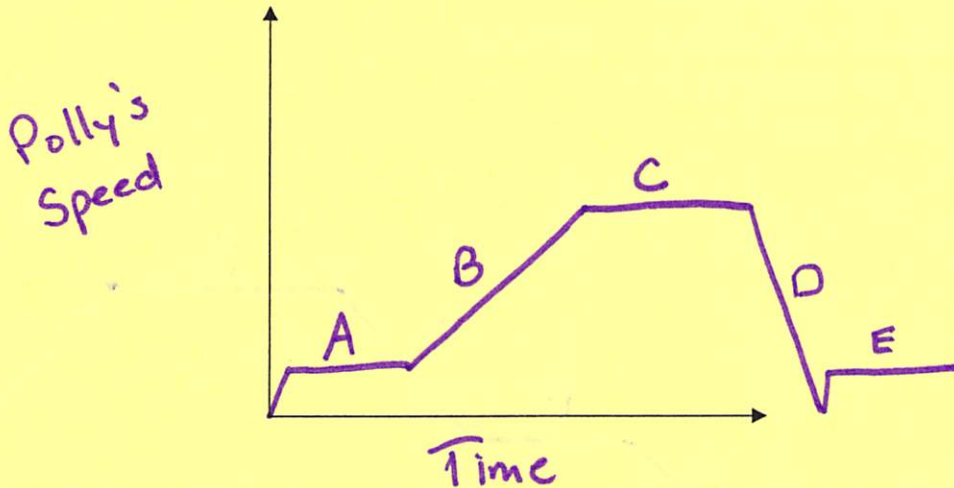
Distance vs. Time

Type of Line	What's Happening
Increasing	Moving Further Away from SP
Decreasing	Moving Closer To SP
Horizontal	Stopped

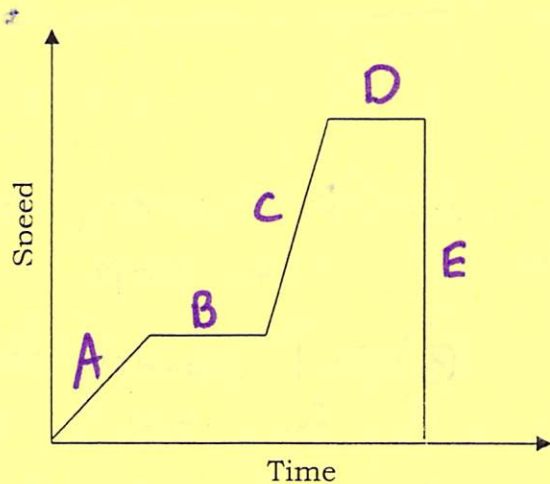
Speed VS. Time Graphing

Example 1: Sketch a graph of a person exercising.

- A) Polly starts by walking to warm her body up
- B) Polly increases her speed from walking to a fast pace run in a few minutes
- C) Polly keeps a constant fast pace run for her workout.
- D) Polly stops to catch her breath.
- E) Polly walks to cool down.



Example 2: Betsy is ice skating. Describe her movement as represented by the graph.



- A) Accelerating
- B) Constant Speed
- C) Really Accelerating
- D) Constant Speed
- E) Hit the Wall Dead Stop

Speed vs. Time

Type of Line	What's Happening
Increasing	Increasing Speed
Decreasing	Decreasing Speed
Horizontal	Constant Speed
Vertical	By Stop