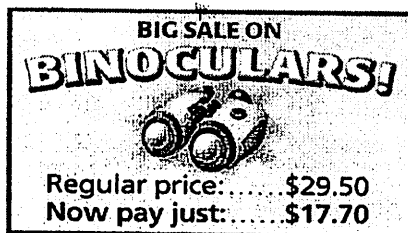


SHOW ALL WORK!

1. Find the sale price of jeans costing \$49.95 after a 15% discount is taken.

2. Find the total cost of a \$15.20 CD with 7% sales tax.

3. Jessica is going to buy binoculars. She notices that they are on sale. How much percent discount did she receive?



4. Inline skates are on sale for 35% off the regular price of \$124.99. If an 8% sales tax is added to the total after the discount has been taken, what is the total cost of the inline skates?

4. Each year the Mannel Department Store has a big end-of-summer sale. At the sale they give customers an additional 25% off on all mark-down merchandise.

a. A beach towel had an original price of \$22. It was marked down 10%. What is the final price after the additional 25% discount?

b. Would it be the same sale price if the store just discounted the towel 35%?

5. Bailey's mom wants to buy her daughter a toy doll house for Christmas. The doll house has an original price of \$75 but is on sale at two different stores.

- Toys-R-Them - 25% off the original price
- Floor-Mart - 15% off but take an additional 15% off at the register

Which store should Baily's mom buy the doll house from?

SHOW ALL WORK!

1. Find the sale price of jeans costing \$49.95 after a 15% discount is taken.

| | | |
|-----------------|-----------------------------------|------------------|
| <u>discount</u> | 15 | |
| original price | 100 | 49.95 |
| | $100x = 749.25$ | |
| | $\div 100$ | $\div 100$ |
| | $x = \$7.4925 \rightarrow \7.49 | |

$$\begin{array}{r}
 \$49.95 \\
 -7.49 \\
 \hline
 \boxed{\$42.46}
 \end{array}$$

2. Find the total cost of a \$15.20 CD with 7% sales tax.

| | | |
|----------------|----------------------------------|------------|
| <u>tax</u> | <u>7</u> | |
| original price | 100 | \$15.20 |
| | $100x = 106.4$ | |
| | $\div 100$ | $\div 100$ |
| | $x = \$1.064 \rightarrow \1.06 | |

$$\begin{array}{r}
 15.20 \\
 + 1.06 \\
 \hline
 \boxed{\$16.26}
 \end{array}$$

3. Jessica is going to buy binoculars. She notices that they are on sale. How much percent discount did she receive?

BIG SALE ON BINOCULARS!



Regular price:\$29.50
Now pay just:\$17.70

Discount = \$11.80

| | | |
|-----------------|-----------------|--------------|
| <u>discount</u> | <u>x</u> | \$11.80 |
| original price | 100 | \$29.50 |
| | $29.50x = 1180$ | |
| | $\div 29.50$ | $\div 29.50$ |
| | $x = 40\%$ | |

4. Inline skates are on sale for 35% off the regular price of \$124.99. If an 8% sales tax is added to the total after the discount has been taken, what is the total cost of the inline skates?

35% Discount

| | | |
|----------|------------------|------------|
| <u>d</u> | <u>35</u> | |
| op | 100 | 124.99 |
| | $100x = 4374.65$ | |
| | $\div 100$ | $\div 100$ |
| | $x = \$43.75$ | |

$$\begin{array}{r}
 124.99 \\
 - 43.75 \\
 \hline
 \$81.24
 \end{array}$$

8% Tax

| | | |
|----------|-----------------|------------|
| <u>t</u> | <u>8</u> | |
| sp | 100 | 81.24 |
| | $100x = 649.92$ | |
| | $\div 100$ | $\div 100$ |
| | $x = \$6.50$ | |

$$\begin{array}{r}
 81.24 \\
 + 6.50 \\
 \hline
 \boxed{\$87.74}
 \end{array}$$

4. Each year the Mannel Department Store has a big end-of-summer sale. At the sale they give customers an additional 25% off on all mark-down merchandise.

a. A beach towel had an original price of \$22. It was marked down 10%. What is the final price after the additional 25% discount?

10% off

$$\frac{d}{op} \quad \frac{10}{100} = \frac{x}{22}$$

$$100x = 220$$

$$\div 100 \quad \div 100$$

$$x = \$2.20$$

$$\begin{array}{r} \$22 \\ - 2.20 \\ \hline \$19.80 \end{array}$$

25% off

$$\frac{25}{100} = \frac{x}{19.80}$$

$$100x = 495$$

$$\div 100 \quad \div 100$$

$$x = \$4.95$$

$$\begin{array}{r} \$19.80 \\ - 4.95 \\ \hline \$14.85 \end{array}$$

b. Would it be the same sale price if the store just discounted the towel 35%?

d/op

$$\frac{35}{100} = \frac{x}{22}$$

$$100x = 770$$

$$\div 100 \quad \div 100$$

$$x = \$7.70$$

$$\begin{array}{r} 22.00 \\ - 7.70 \\ \hline \$14.30 \end{array}$$

5. Bailey's mom wants to buy her daughter a toy doll house for Christmas. The doll house has an original price of \$75 but is on sale at two different stores.

- Toys-R-Them - 25% off the original price
- Floor-Mart - 15% off but take an additional 15% off at the register

Which store should Baily's mom buy the doll house from?

Toys-R-Them

$$\frac{d}{op} \quad \frac{25}{100} = \frac{x}{75}$$

$$100x = 1875$$

$$\div 100 \quad \div 100$$

$$x = \$18.75$$

$$\begin{array}{r} \$75.00 \\ - \$18.75 \\ \hline * \$56.25 * \end{array}$$

Floor-Mart ← CHEAPER
15% off

$$\frac{d}{op} \quad \frac{15}{100} = \frac{x}{75}$$

$$100x = 1125$$

$$\div 100 \quad \div 100$$

$$x = \$11.25$$

$$\begin{array}{r} 75.00 \\ - 11.25 \\ \hline \$63.75 \end{array}$$

Additional 15% off

$$\frac{15}{100} = \frac{x}{63.75}$$

$$100x = 956.25$$

$$\div 100 \quad \div 100$$

$$x = \$9.56$$

$$\begin{array}{r} 63.75 \\ - 9.56 \\ \hline * \$54.19 * \end{array}$$