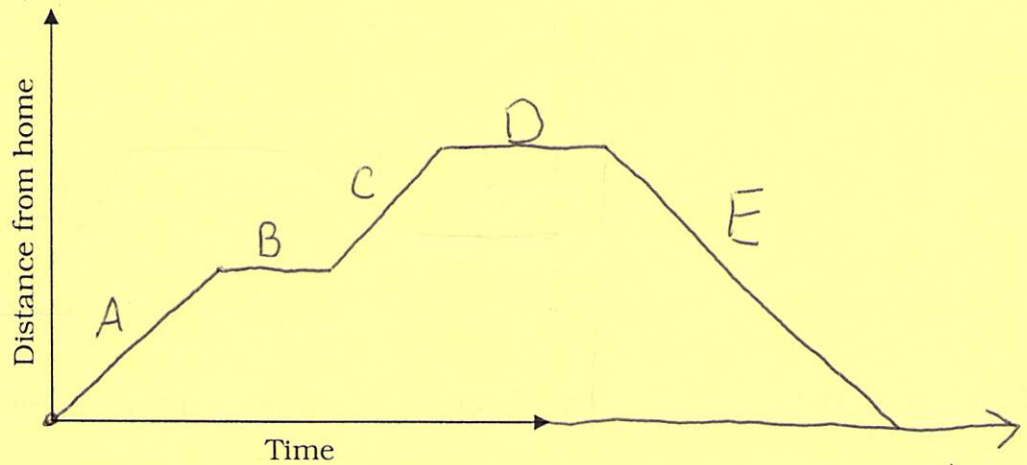


5-1 Relating Graphs to Events

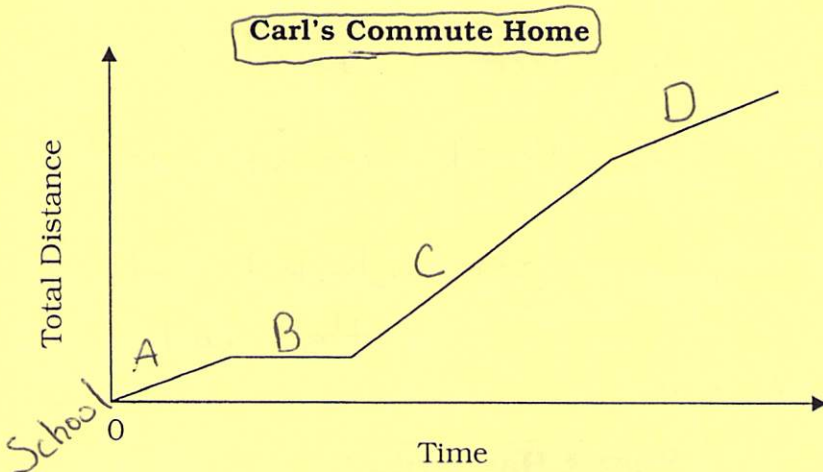
Distance VS. Time Graphing

Example 1: Sketch a graph of a person leaving from home and going to the grocery store.

- A) Jesse drives his car down his street.
- B) Jesse has to stop at a stoplight
- C) Jesse drives the rest of the way to the store.
- D) Jesse stays at the store for awhile.
- E) Jesse drives all the way home.



Example 2: Carl walks and takes a bus from school to home each day. Describe what the graph shows in a narrative, or by labeling each part.



- Home (A) Carl walks to bus stop
- (B) Carl waits for bus
- (C) Bus takes him to his home stop
- (D) Carl walks into his house

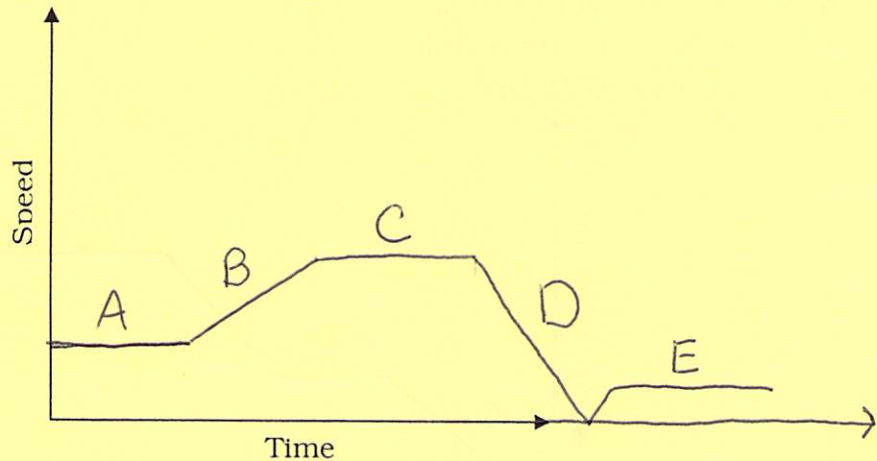
Distance vs. Time

Type of Line	What's Happening
	Distance is increasing from starting place
	Stop Distance is neither incr. or decr.
	Distance is decreasing from starting place Moving closer

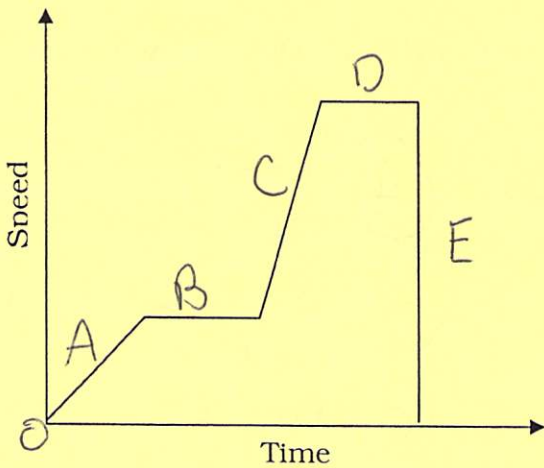
Speed VS. Time Graphing

Example 1: Sketch a graph of a person exercising.

- A) Polly starts by walking to warm her body up
- B) Polly increases her speed from walking to a fast pace run in a few minutes
- C) Polly keeps a constant fast pace run for her workout.
- D) Polly stops to catch her breath.
- E) Polly walks to cool down.



Example 2: Betsy is ice skating. Describe her movement as represented by the graph.



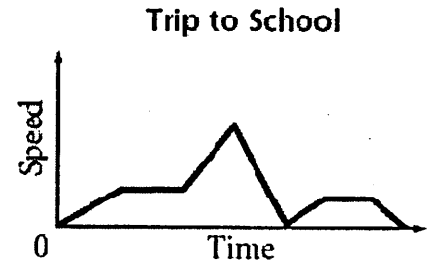
- (A) Betsy increases speed
- (B) Betsy is at a constant speed
- (C) Betsy increases speed
- (D) Betsy is at constant speed
- (E) Betsy got checked into the wall.

Speed vs. Time

Type of Line	What's Happening
/	Increasing Speed
—	Constant Speed
\	Decreasing Speed
	Stop

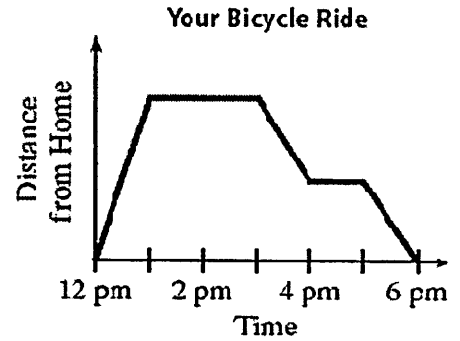
The graph shows the speed a student traveled on the way to school.

1. What do the flat parts of the graph represent?
2. Circle the sections of the graph that show the speed decreasing.



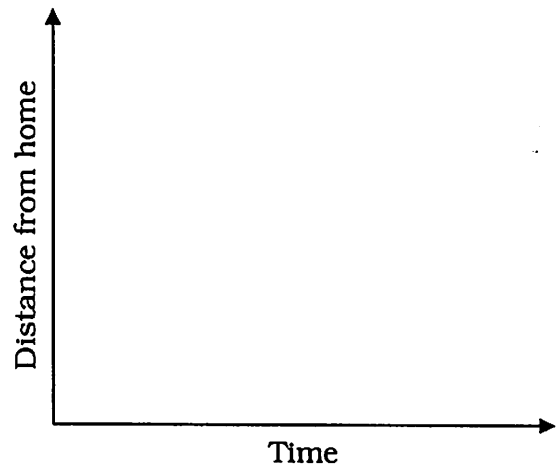
The graph shows the relationship between time and distance from home.

3. What do the flat parts of the graph represent?
4. What do the sections from 3 P.M. to 4 P.M. and from 5 P.M. to 6 P.M. represent?
5. What does the section from 12 P.M. to 1 P.M. represent?



6. Sketch a graph of the following scenario.

- A) Jim rode the bus to school.
- B) Jim stayed at school all day.
- C) Jim walked halfway home to a friend's house.
- D) Jim stayed at his friend's house for an hour.
- E) Jim's dad picked him up and drove Jim home.



7. Write a description of Sara's speed as she rides her bike to school

